



Frontier Elementary

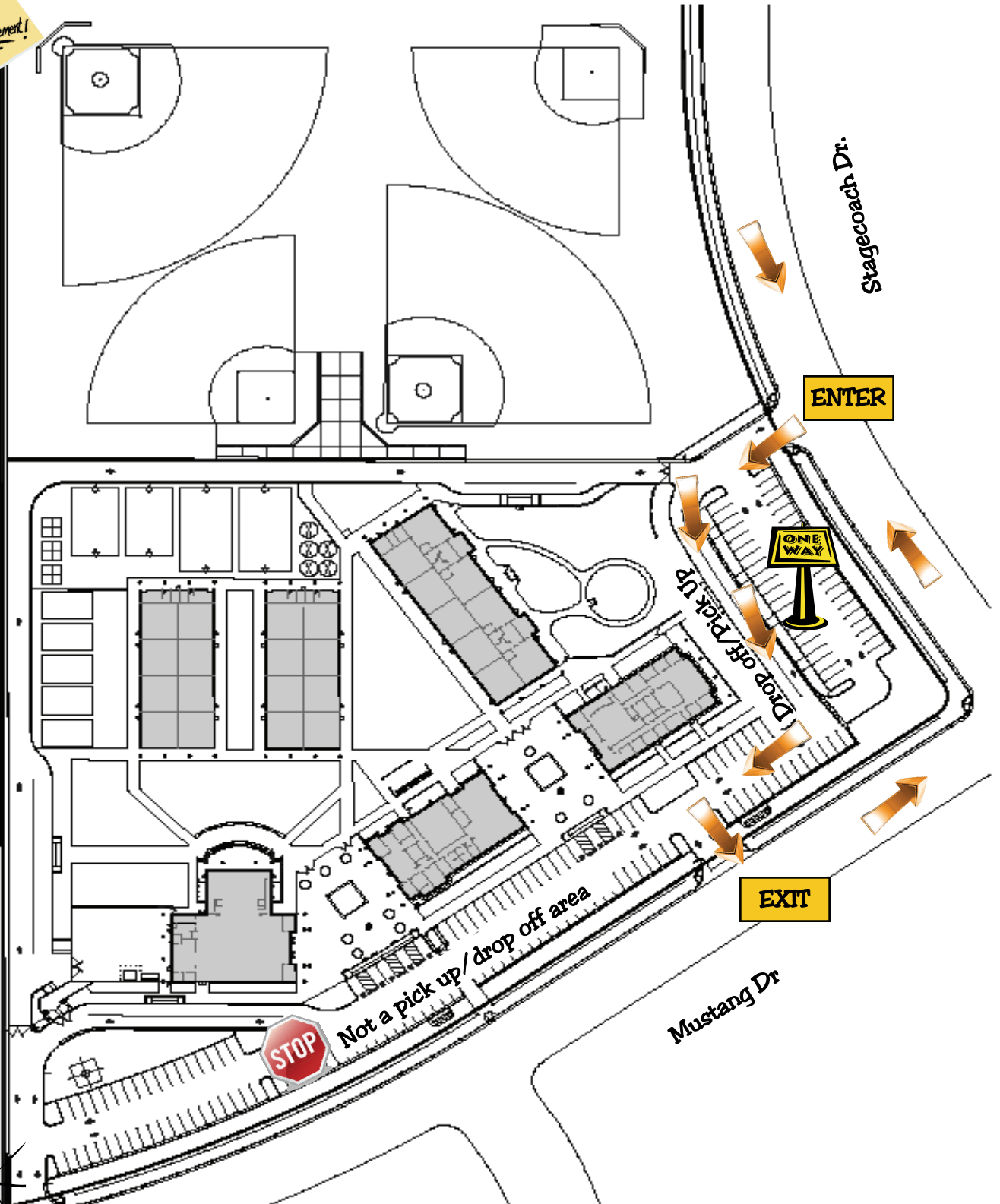
Volunteer Information

- ✓ **All adults working with students must first be cleared by the office**
 1. Forms
 2. TB clearance within the last 60 days
 3. Copy of CDL for Megan's Law check

- ✓ **Not everyone will need fingerprinting**
 1. Supervised by teacher = no fingerprinting
 2. Some FEPTC volunteers may be fingerprinted (Student Store, Book Fair, etc.)

- ✓ **Previously cleared volunteers only need to resubmit if:**
 1. There has been a change in personal information (address, name, etc.)
 2. TB has expired (office will notify)
 3. It has been determined that supervised status needs change

Announcement!



Drop off/Pick up area is one way only. You will enter off of Stagecoach Drive and exit onto Mustang Drive. School personnel will be present to assist you the first week of school. A large majority of our students ride their bikes to school each day and in an effort to ensure their safety, it is important to remember that the area near the office is NOT a Drop off/Pick up area.